

OpenVox Telephony Cards

www.openvox.com.cn

Products & Solutions/FXO/FXS Cards



A2410P

OpenVox A2410P is a new analog card. It can be used for connecting analog telephones and analog POTS lines through a PC. It delivers the superior voice quality on both FXO and FXS interfaces in all 24 ports.

 [Learn More](#)



A1200P

Via professional firmware design and new device driver, the A1200P can greatly decrease the cpu payload, and also increase the stability of the whole system. The 12-port card even use less cpu time than the 4-port card!

 [Learn More](#)



A400E

A400E is a 4-port FXO/FXS analog card with PCI Express slot. User could choose any of combinations of OpenVox FXO-100 or FXS-100 modules according to the business requirements.

 [Learn More](#)



A400M

A400M is a 4-port analog card with mini-PCI and works with PSTN line. It can be used to build a PBX system based on Asterisk open source platform.

 [Learn More](#)



A400P

A400P is a 4-port FXO/FXS analog card. User could choose any of combinations of OpenVox FXO-100 or FXS-100 modules according to the business requirements.

 [Learn More](#)



A800E

OpenVox A800E delivers great voice quality in the telephony systems. With interchangeable FXS/FXO modules, it can eliminate the requirement for separate channel banks or access gateways.

 [Learn More](#)



A800P

OpenVox A800P is an 8-port analog card. User could choose any of combinations of OpenVox FXO-100 or FXS-100 modules according to the business requirements.

 [Learn More](#)



AE2410P

OpenVox AE2410P is a new generation analog card with Octasic Hardware Echo Cancellation Module on board. With the interchangeable quad-FXS and quad-FXO modules, AE2410P can eliminate the requirement for separate channel banks or access gateways.

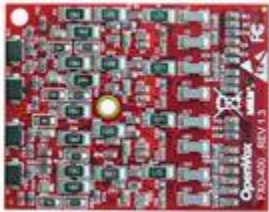
 [Learn More](#)



FXO-100

FXO-100 module allows A-400 PCI card to terminate analog telephone lines (POTS). Because of the modular design, user can activate additional ports at any time with more FXO-100 or FXS-100 daughter cards.

 [Learn More](#)



FXO400

The FXO400 Quad-FXO module allows OpenVox Analog A2410P/AE2410P series cards to terminate four analog telephone lines (POTS) per module.

 [Learn More](#)



FXOS200

FXOS200 is a Dual-channel module, which builds one FXO and one FXS channel with failover capability. When PBX system is down, PSTN line connecting FXO will automatically switch to analog phone connecting with FXS.

 [Learn More](#)



FXS-100

FXS-100 module allows A-400 PCI card to terminate analog telephones. Because of the modular design, user can activate additional ports at any time with more FXS-100 or FXO-100 daughter cards.

 [Learn More](#)



FXS400

The FXS400 Quad-FXS module allows OpenVox Analog A2410P/AE2410P series cards to terminate four analog telephones per module.


 [Learn More](#)

Products & Solutions/T1/E1/J1 Cards



[DE430P](#)

OpenVox DE430P is now the leading 4 port T1/E1/J1 PCI card in the open source industry. It takes full advantage of Octasic® Hardware Echo Cancellation Module to deliver the superior voice quality over T1, E1, and J1 interface.

 [Learn More](#)



[D110E](#)

D110E supports E1, T1 and J1 environments. It is selectable on a per-card or per-port basis. This feature enables signaling translation between E1 and T1 equipments and allows T1 channel banks to connect with E1 circuits in a cost effective way.

 [Learn More](#)



[D110P](#)

D110P is a single span E1/T1/J1 digital line telephony product, it's non-RoHS. D110P is a high-performance, cost-effective single span digital voice card. It provides compact and powerful interf ...

 [Learn More](#)



[D115E](#)

The D115E is a new version of single T1/E1 card with PCI Express. With the improved I/O speed, the card reduces CPU usage and increased card density per server. D115E is fully compatible with Asterisk applications. The open source driver supports an API interface for custom application development.

 [Learn More](#)



[D115P](#)

The D115P is a new version of single T1/E1 card. With the improved I/O speed, the card reduces CPU usage and increased card density per server. D115P is fully compatible with Asterisk applications. The open source driver supports an API interface for custom application development.

 [Learn More](#)



[D130P](#)

OpenVox D130P is now the leading single port T1/E1/J1 PCI card in the open source industry. It supports up to 32 channels in E1 mode or 24 channels in T1/J1 modes.

 [Learn More](#)



[D210E](#)

D210E supports E1, T1 and J1 environments. It is selectable on a per-card or per-port basis. This feature enables signaling translation between E1 and T1 equipments and allows T1 channel banks to ...

 [Learn More](#)



DE210E

The DE210E is a bundling of our D210E product and our new EC100 Octasic DSP-based echo cancellation module. The EC100 provides a certified carrier-grade algorithm that has been labeled a benchmark for echo cancellation for OpenVox.

 [Learn More](#)



D210P

D210P supports E1, T1 and J1 environments. It is selectable on a per-card or per-port basis. This feature enables signaling translation between E1 and T1 equipments and allows inexpensive T1 chan ...

 [Learn More](#)



DE210P

The DE210P is a bundling of our D210P product and our new EC100 Octasic DSP-based echo cancellation module. The EC100 provides a certified carrier-grade algorithm that has been labeled a benchmar ...

 [Learn More](#)



D230P

OpenVox D230P is now the leading 2 port T1/E1/J1 PCI card in the open source industry. It supports up to 64 channels in E1 mode or 48 channels in T1/J1 modes.

 [Learn More](#)



D410E

D410E supports E1, T1 and J1 environments. It is selectable on a per-card or per-port basis. This feature enables signaling translation between E1 and T1 equipments and allows T1 channel banks to ...

 [Learn More](#)



DE410E

The DE410E is a bundling of our leading D410E product and our new EC100 Octasic DSP-based echo cancellation module. The EC100 provides a certified carrier-grade algorithm that has been labeled a ...

 [Learn More](#)



D410P

D410P supports E1, T1 and J1 environments. It is selectable on a per-card or per-port basis. This feature enables signaling translation between E1 and T1 equipments and allows inexpensive T1 chan ...

 [Learn More](#)



DE410P

The DE410P is a bundling of our leading D410P product and our new EC100 Octasic DSP-based echo cancellation module. The EC100 provides a certified carrier-grade algorithm that has been labeled a ...

 [Learn More](#)



D430P

OpenVox D430P is now the leading 4 port T1/E1/J1 PCI card in the open source industry. It supports up to 128 channels in E1 mode or 96 channels in T1/J1 modes.

 [Learn More](#)



DE115E

The DE115E is a new version of single T1/E1 card that has hardware echo cancellation on board. The EC100 echo cancellation is an Octasic DSP-based module.

 [Learn More](#)



DE115P

The DE115P is a new version of single T1/E1 card that has hardware echo cancellation on board. The EC100 echo cancellation is an Octasic DSP-based module.

 [Learn More](#)



DE130P

OpenVox DE130P is now the leading single port T1/E1/J1 PCI card in the open source industry. It takes full advantage of Octasic® Hardware Echo Cancellation Module to deliver the superior voice quality over T1, E1, and J1 interface.

 [Learn More](#)



DE230P

OpenVox DE230P is now the leading 2 port T1/E1/J1 PCI card in the open source industry. It takes full advantage of Octasic® Hardware Echo Cancellation Module to deliver the superior voice quality over T1, E1, and J1 interface.

 [Learn More](#)